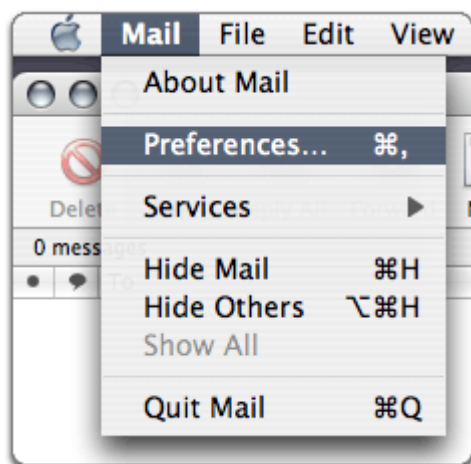


Setting Up Your Apple Mail

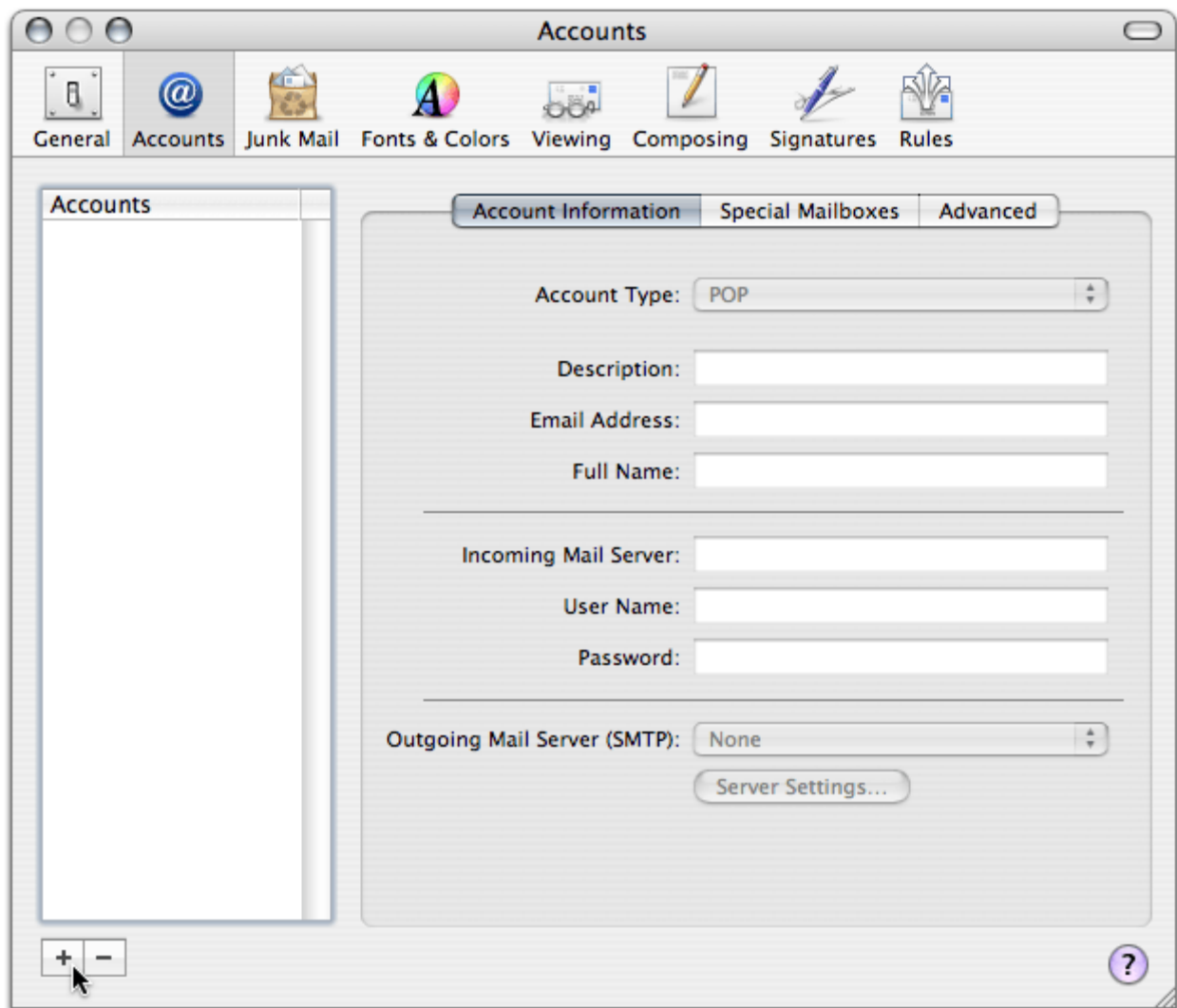
This tutorial shows you how to set up Apple Mail to work with your email account.

To Set Up Your Apple Mail

1. From the Mail menu, select **Preferences**.



2. Select the Accounts tab, and click the **plus sign(+)** at the bottom of the Accounts box.



3. In the Account Information screen, select **POP** from the **Account Type** list, and enter your information as follows:

Description

Enter the name of your account.

Email Address

Enter your email address.

Full Name

Enter your name.

Incoming mail server (POP3)

Your incoming server is *mail.coolexample.com*, where "coolexample.com" is the name of your domain.

User Name

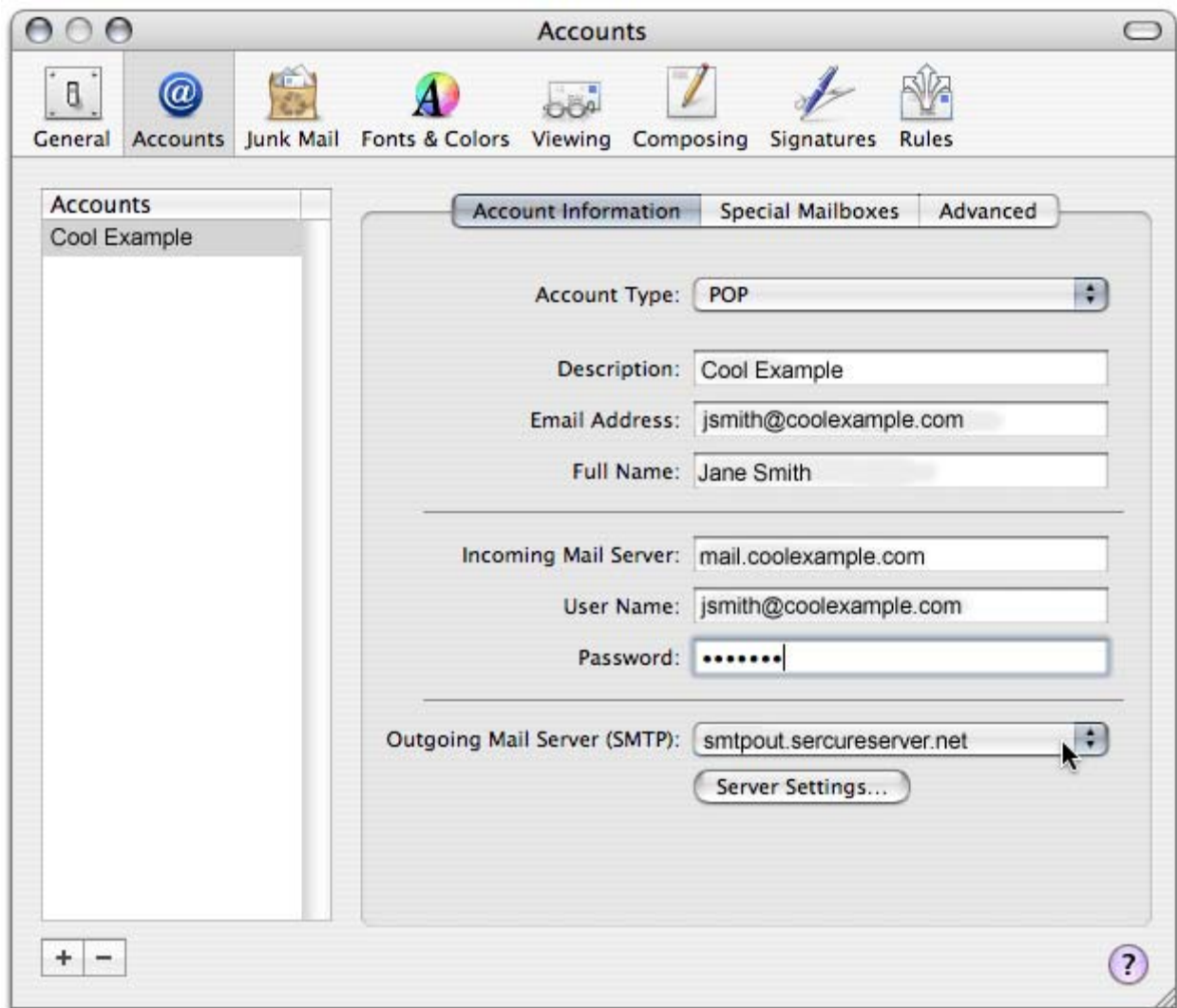
Enter your email address.

Password

Enter the password you set up for your email account.

Outgoing Mail Server (SMTP)

Select **Add Server** from the list.



4. When the SMTP Server Options window displays, type *smtpout.secureserver.net* in the **Outgoing Mail Server** field and change the **Server Port** setting to 80.
5. Under the **Authentication** list, select **Password** and enter your SMTP user name (full email address) and password.
6. Click **OK**.

SMTP Server Options

Outgoing Mail Server:

Check with your system administrator before changing any of the advanced options below:


Server port:

Use Secure Sockets Layer (SSL)

Authentication:

User Name:

Password:



NOTE: "smtpout.secureserver.net" is an SMTP relay server. In order to use this server to send emails, you must first activate SMTP relay on your email account. Log on to your Manage Email Accounts page to set up SMTP relay. If you do not have SMTP relay set up and your Internet Service Provider (ISP) allows it, you can use the outgoing mail server for your Internet Service Provider. Contact your Internet Service Provider to get this setting.